

GBT PRODUCT CATALOGUE

2024



EMS 
MAKE ME SMILE.

OUR SWISS PRODUCTS

WHY GBT	4
GBT COMPASS.....	6
GBT LOUNGE.....	8
AIRFLOW® PROPHYLAXIS MASTER.....	10
AIRFLOW® STATION	12
AIRFLOW® ONE	14
AIRFLOW® PLUS POWDER	16
EMS BIOFILM DISCLOSER.....	20
HANDPIECES	22
GBT FLOWCONTROL®.....	26
PIEZON® INSTRUMENTS	30
HYGIENE SOLUTIONS.....	34
GBT AIRFOAM.....	36
GBT VISIGATE®.....	37
ACCESSORIES	38
GBT CERTIFIED	41
EMS WORLDWIDE	43



WHY GBT?

- 1 A GAME CHANGER **FOR BETTER ORAL PROPHYLAXIS**
- 2 GOOD ORAL HEALTH = **HEALTHY PATIENT**
- 3 BEST CLINICAL PROTOCOL = **BEST CLINICAL RESULTS.**
GBT REDUCES THE RISK OF CARIES, GINGIVITIS AND PERIODONTAL DISEASE.

“An efficient treatment can only be obtained after complete biofilm removal.”

Nicole Einemann and Manuela Cordes, Dental Hygienists, Dr. Arendt Dental, Bremerhaven, Germany

- 4 **PATIENTS WANT GBT. NOTHING ELSE.**
NO MORE FEAR OF PAIN. NO MORE DISCOMFORT.
ONCE EXPERIENCED, PATIENTS LOVE GBT,
ESPECIALLY CHILDREN.
- 5 **SATISFIED CLINICIANS,**
RELAXED PATIENTS. EFFICIENT, SYSTEMATIC
WORKFLOW WITH ERGONOMIC INSTRUMENTS.
BYE-BYE STRESS, BYE-BYE CARPAL TUNNEL S., BYE-BYE BIOFILM.
- 6 **SUCCESSFUL DENTAL PRACTICES -**
GOOD MONEY FOR GOOD WORK. ENTHUSIASTIC PATIENTS WILL
RECOMMEND THE **GBT-CERTIFIED** PRACTICE.
- 7 ORAL MEDICINE & PREVENTION ARE THE **FUTURE OF DENTISTRY.** GBT IS THE FUTURE OF PREVENTION.
- 8 GBT IS A SURPRISING **“I FEEL GOOD EXPERIENCE”.**
STATE-OF-THE-ART IS FAVORED BY PATIENTS.
AND BY CLINICIANS.



Reserve a free GBT Demo: gbt-dental.com/GBT-DEMO-ENG

HOW TO DO GBT?



01 ASSESSMENT AND INFECTION CONTROL

Protect your patients and your practice team from infections. Start GBT by rinsing 40 seconds with BACTERX® Pro. Diagnosis and documentation of the individual supra- and subgingival status for each patient.

02 DISCLOSE

Make the oral biofilm visible by disclosing and explain the **WHY** to the patient. Scientific evidence confirms that oral biofilm causes 95 % of all dental problems: caries, gingivitis and periodontitis.

03 MOTIVATE

Emphasize the importance of oral home care and professional prevention. Instruct your patients in oral hygiene.

04 AIRFLOW® MAX

Eliminate the disclosed biofilm supra- and subgingivally up to 4mm with AIRFLOW® MAX and AIRFLOW® PLUS Powder. The original **AIR-FLOWING®** is minimally invasive and pain-free.*

05 PERIOFLOW®

Remove oral biofilm in deep pockets up to 9mm with PERIOFLOW® Nozzle and AIRFLOW® PLUS Powder.*

06 PIEZON® PS / PI MAX

Gently remove calculus on natural teeth with the original PIEZON® NO PAIN PS (Perio Slim) Instrument and around implants, restorations and orthodontic appliances with the new PIEZON® PI (Peri Implant) MAX Instrument.*

07 CHECK

Check whether oral biofilm and calculus have been removed completely and whether previously hidden caries is now visible. Conventional professional teeth cleaning removes only 50 % of oral biofilm in areas that are difficult to reach.

Source: Stiftung Warentest 7/2015. **NO MORE POLISHING**. Polishing and grinding with abrasive pastes is truly no longer necessary. Why produce unnecessary smear layers?

08 RECALL

Would your patient like to answer the GBT questionnaire?
This is helpful for a successful GBT treatment.
Schedule the next prophylaxis appointment.

*Learn more about how GBT works in practice, how to avoid dust when AIR-FLOWING®, how to use PERIOFLOW® correctly or how to minimize the risk of emphysema at the Swiss Dental Academy (SDA): sda.dental/Contact-GBT-Expert



**A REGULAR GBT RECALL GUARANTEES
LASTING ORAL HEALTH FOR YOUR PATIENTS.**

We recommend a free GBT Demo: gbt-dental.com/GBT-DEMO-ENG

THE GBT COMPASS AND ITS

08 RECALL

HEALTHY PATIENT = HAPPY PATIENT

- ▶ Schedule recall frequency according to risk assessment
- ▶ Ask your patient if he or she liked the treatment

07 CHECK

MAKE YOUR PATIENT SMILE

- ▶ Do a final check for remaining biofilm
- ▶ Ensure calculus is fully removed
 - ▶ Accurately diagnose caries
 - ▶ Protect with fluoride
 - ▶ No polishing anymore

06 PIEZON® PS

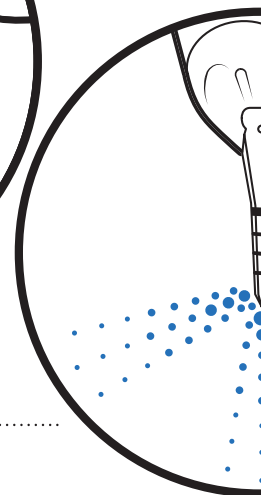
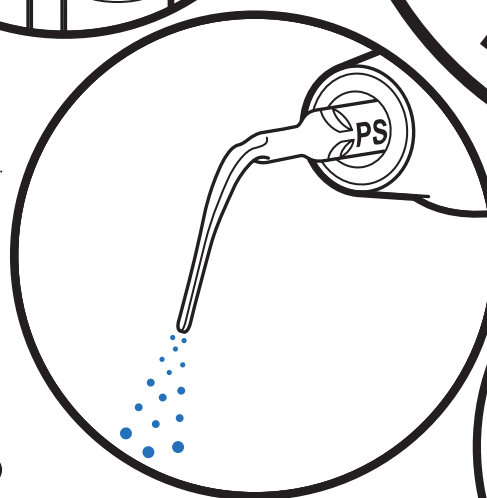
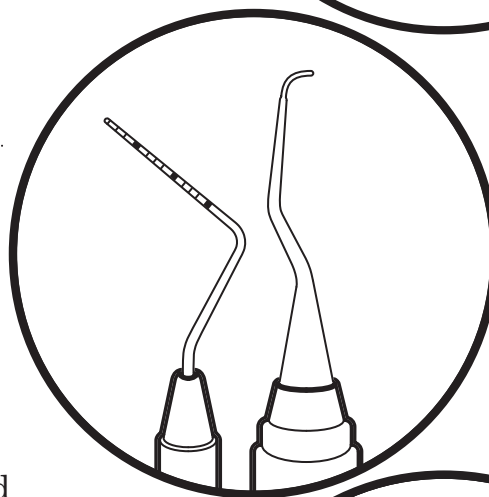
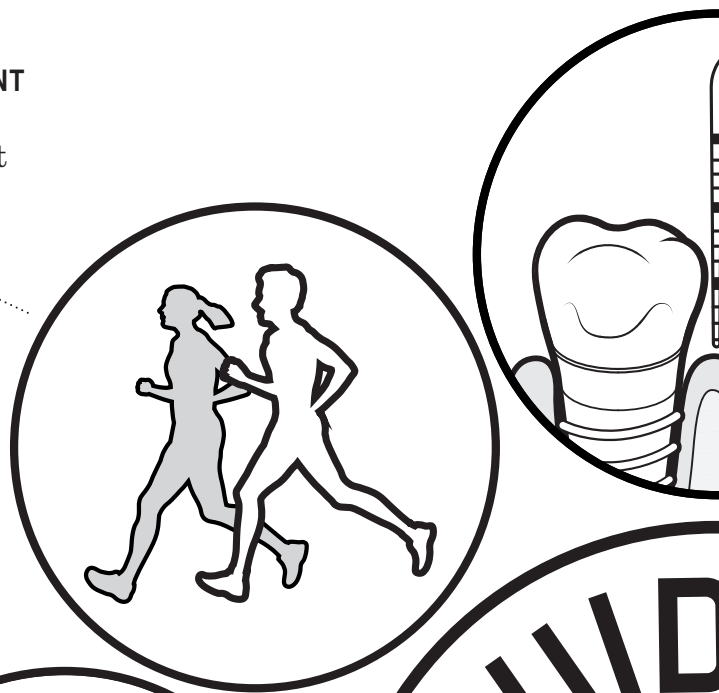
REMOVE REMAINING CALCULUS

- ▶ Use the minimally invasive EMS PIEZON® PS Instrument supra- and subgingivally up to 10 mm
- ▶ Clean > 10 mm pockets with mini curette
 - ▶ Use EMS PIEZON® PI MAX Instrument around implants up to 3 mm subgingivally and on restorations

05 PERIOFLOW®

REMOVE BIOFILM IN >4 TO 9 MM POCKETS

- ▶ Use AIRFLOW® PLUS Powder on natural teeth in deep pockets and root furcations and on implants
- ▶ Use new and slimmer PERIOFLOW® Nozzle



8-STEP PROTOCOL



01 ASSESSMENT AND INFECTION CONTROL

ASSESS EVERY CLINICAL CASE AND IMPLEMENT HYGIENE MEASURES

- Start by rinsing with BacterX® Pro mouthwash
- Assess teeth, gingiva and periodontal tissues
- Assess implants and peri-implant tissues

02 DISCLOSE

MAKE BIOFILM VISIBLE

- Highlight to patients the disclosed biofilm and their problematic areas with EMS Biofilm Discloser
- The color will guide biofilm removal
 - Once biofilm is removed, calculus is easier to detect

03 MOTIVATE

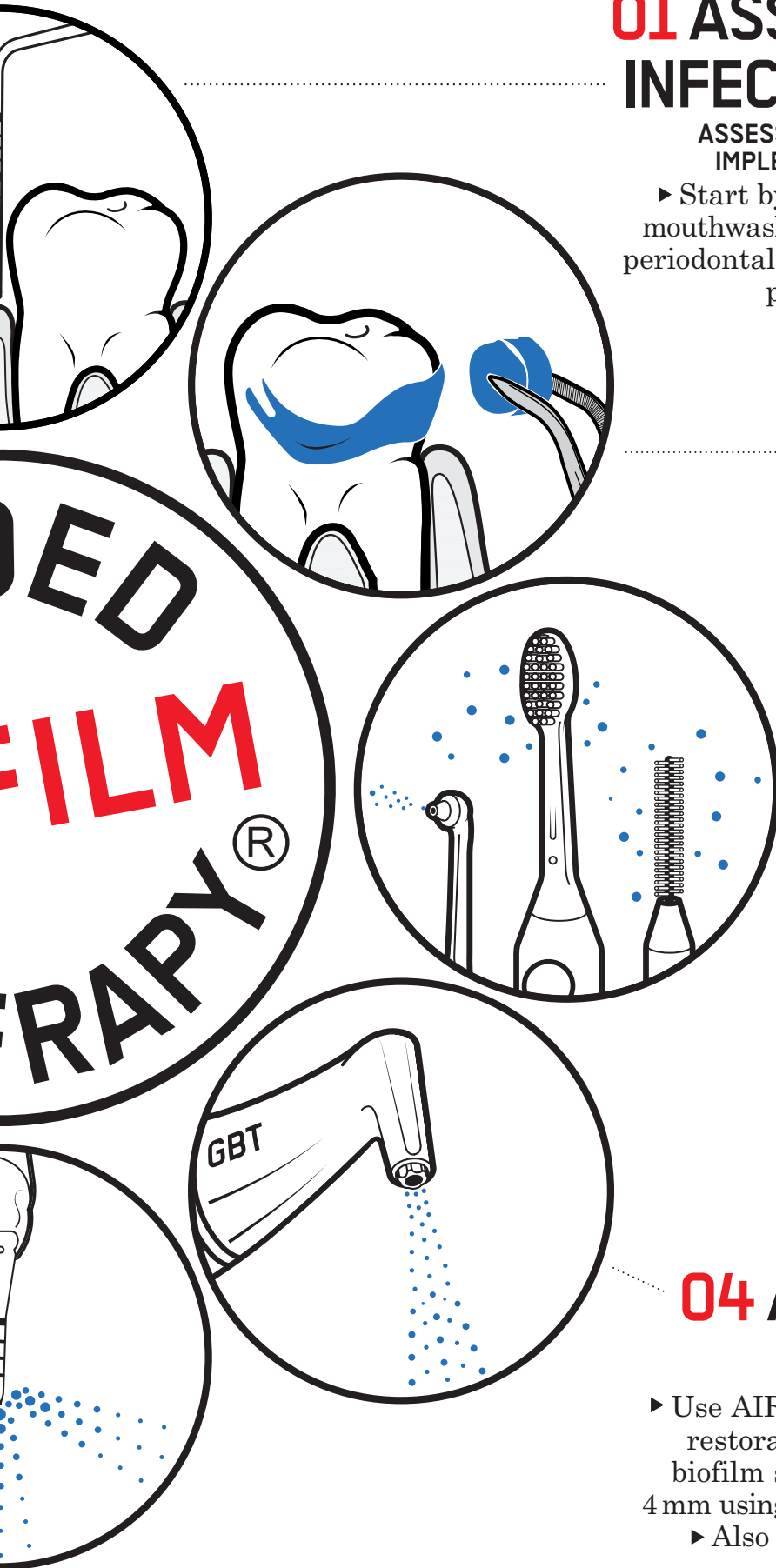
RAISE AWARENESS AND TEACH

- Emphasize the importance of prevention
- Instruct your patients in oral hygiene
- EMS recommends interdental brushes or dental floss as well as electric or manual toothbrushes and AIRFLOW® erythritol toothpaste for daily home care

04 AIRFLOW® MAX

REMOVE BIOFILM, STAINS AND EARLY CALCULUS

- Use AIRFLOW® MAX for natural teeth, restorations and implants
- Remove biofilm supra- and subgingivally up to 4 mm using AIRFLOW® PLUS 14 µm Powder
 - Also remove biofilm from gingiva, tongue and palate



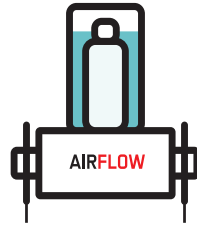
THE GBT LOUNGE*



ALL IN ONE



AIRFLOW® PROPHYLAXIS MASTER



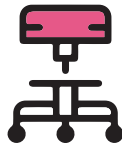
- Offer the best, pain-free prophylaxis treatment with the latest technologies such as AIRFLOW® MAX, PERIOFLOW® and PIEZON® PS/PI MAX
- Fully integrated into the chair

FLOATING CHAIR



- Ultra relax upholstery for ultimate patient comfort
- Maximized legroom
- Ergonomic flexibility
- Built-in tray with 360° rotation

STOOL



- Ergonomically improved posture
- Saddle seat
- Adjustable sitting angle

WIRELESS PEDAL



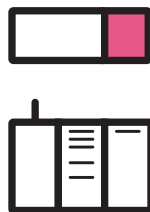
- No cables on the floor
- Wireless connection to your Airflow® Prophylaxis Master

LED LIGHT



- Intensity up to 50'000Lux
- Touchless sensor for improved hygiene

FURNITURE*



- Washing unit
- Touchless dispensers for consumables
- Stores consumables for up to 14 days

*Additional components available depending on your country/region. Contact your GBT expert for more information.

GET IN TOUCH AND TAKE YOUR PRACTICE TO THE NEXT LEVEL

Leave your contact details so a GBT expert can get in touch with you and plan a tailor-made GBT Lounge for your dental practice. **Scan the QR Code.**



*If available in your country

AIRFLOW[®] PROPHYLAXIS MASTER

► The new unit from EMS is a game changer that allows to perform Guided Biofilm Therapy under optimum conditions.



2018



REF FT-229

1. GOOD DESIGN[®], one of the most important Design Prizes in the world from the Chicago Athenaeum Museum of Architecture and Design

INCLUDES



AIRFLOW® MAX APPLICATION

AIRFLOW® MAX Handpiece
Easy Clean
Water and air filters
Maintenance set



PERIOFLOW® APPLICATION

PERIOFLOW® Handpiece
20 PERIOFLOW® Nozzles



PIEZON® APPLICATION

PIEZON® LED Handpiece
3 x PIEZON® PS Instruments
4 spare Light Guides



PIEZON PI MAX
Instrument¹



Wireless boost pedal¹



PIEZON® bottle



PLUS and CLASSIC
Powder chambers



3 PLUS Powder
1 COMFORT Powder
Enough powder to treat
around 155 patients



NIGHT CLEANER bottle²
+ 800 ml refill¹
2 Clip+Clean



Biofilm
Discloser¹



GBT Training Kit¹
with PIEZON®
Instrument Check Tool



4 GBT FLOWCONTROL®¹



GBT VISIGATE®¹

GBT READY CONFIGURATION*

Australia / NZ: FT-229-4B-T04
Nordics: FT-229-1B-U00
Switzerland: FT-229-1B-U06



* If GBT configurations ordered

¹ If available in your country

² Could be CLEANER bottle in some countries

See Accessories p.38

AIRFLOW® PROPHYLAXIS STATION

AIRFLOW® STATION

► The all-in-one ultracompact prophylaxis station with a futuristic design.

Includes:

- Cart
- Cable sleeve
- Installation kit

Recommended for:
AIRFLOW®
Prophylaxis
Master when
connected to the
unit's waterline



and for AIRFLOW®
One.



REF DW-048B



ALL IN ONE



AIRFLOW® STATION+

► The ultracompact all-in-one prophylaxis station with a futuristic design. An independent water supply system is integrated directly into the cart for enhanced ergonomics with no need for an external water supply connection.

Includes:

- Cart
- 800 ml water bottle
- Air filter cartridge
- Cable sleeve
- Installation kit

Recommended for:



AIRFLOW®
Prophylaxis Master

REF DW-048A



AIRFLOW® ONE

► For dental cabinets already equipped with independent PIEZON® units on their chair or tabletops.



REF FT-230

INCLUDES



AIRFLOW® MAX APPLICATION
AIRFLOW® MAX Handpiece
Easy Clean
Water and air filters
Maintenance set



PERIOFLOW® APPLICATION
PERIOFLOW® Handpiece
20 PERIOFLOW® Nozzles



PLUS and CLASSIC
Powder chambers



Wireless boost pedal¹



PIEZON® bottle



Biofilm
Discloser¹



NIGHT CLEANER bottle²
+ 800 ml refill¹
2 Clip+Clean



GBT Training Kit¹
with PIEZON®
Instrument Check Tool



3 PLUS Powder
1 COMFORT Powder
Enough powder to treat
around 155 patients



4 GBT FLOWCONTROL®¹



GBT VISIGATE®¹

GBT READY CONFIGURATION*

Australia / NZ: FT-230-4B-T04
Nordics: FT-230-1B-U00
Switzerland: FT-230-1B-U06



* If GBT configurations ordered

¹ If available in your country

² Could be CLEANER bottle in some countries

AIRFLOW® PLUS POWDER

► AIRFLOW® PLUS Powder is a High-Tech powder which removes biofilm and early calculus in a minimally-invasive way from all types of surfaces:

- Enamel
- Dentine
- Soft tissue
- Tongue and palate
- Primary teeth
- Orthodontic appliances
- Implant surfaces
- Restorations

No salty taste.
Your patients will love it.



reddot winner 2021



Innovation
1st Prize 2013
IDS International Dental Show,
2013, Cologne / Germany



► The Erythritol based PLUS Powder can be applied supra- and subgingivally. The particle size of PLUS Powder is only 14µm.

1 x 400 g

REF DV-082/Z

4 x 400 g

REF DV-082/X

ONE POWDER ONLY

FOR 95% OF ALL CASES



AIRFLOW® MAX



PERIOFLOW® Nozzle

OPTIMAL COMFORT
MINIMALLY INVASIVE
MAXIMALLY PREVENTIVE

TEETH

- ▶ Primary and secondary teeth

DENTAL HARD TISSUES

- ▶ Enamel
- ▶ Dentine
- ▶ Cementum

ORAL SOFT TISSUES

- ▶ Gingiva: supra- and subgingival pockets up to 9mm
- ▶ Tongue
- ▶ Palate

RESTORATIONS AND PROSTHETICS

- ▶ Restorations
- ▶ Prosthetics
- ▶ Dentures

IMPLANTS

- ▶ Peri-implant sulcus
- ▶ Deep peri-implant pockets

ORTHODONTICS

- ▶ Orthodontic brackets
- ▶ Aligners

PREPARES FOR:

- ▶ Caries diagnosis
- ▶ Fluoride treatment
- ▶ Orthodontic treatment
- ▶ Restorative and prosthetic treatment
- ▶ Bleaching procedures



reddot winner 2021



- ▶ The original AIRFLOW® PLUS powder is now available in a high-quality aluminum bottle (400 grams) for greater sustainability. After usage of the AIRFLOW® PLUS powder it reverts to a drinking bottle.

ONLY USE EMS POWDERS!

- ▶ EMS powders are much less abrasive than traditional mechanical debridement techniques such as rubber cups and handscaling.
- ▶ As part of the GBT disclosing phase, coloration also minimizes AIRFLOW® MAX abrasion. No more color signifies that all biofilm has been removed: the objective of AIRFLOW® MAX is achieved, to preserve the integrity of dental tissues.
- ⚠ EMS devices have been designed and tested for exclusive use with EMS prophylaxis powders.

! ONLY USE EMS POWDERS



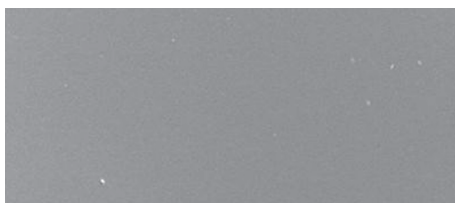
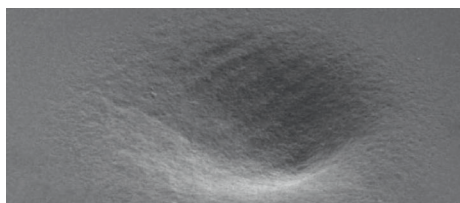
Study from
Barnes et al.



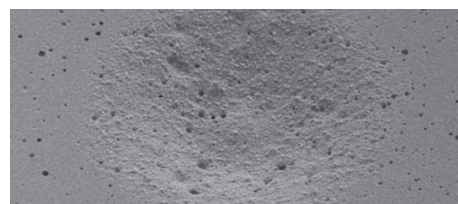
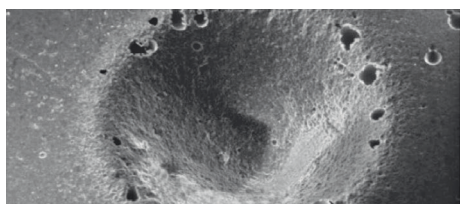
**OSSPRAY
CALCIUM SODIUM
PHOSPHOSILICATE¹**

**EMS AIRFLOW® PLUS
POWDER ERYTHRITOL²**

**EMS SODIUM
BICARBONATE³**



EFFECT OF 5 SEC AIR POLISHING ON HUMAN ENAMEL



EFFECT OF 5 SEC AIR POLISHING ON GLASS IONOMER

1. Barnes CM, et al. J Clin Dent 2014;25:76-87. | 2. For AIRFLOW® PLUS Powder complimentary tests have been submitted to the J Clin Dent (Barnes CM, et al.). | 3. Barnes CM, et al. J Clin Dent 2014;25:76-87. In the study by Barnes, J Clin Dent 2014, the EMS sodium bicarbonate had a particle size of 65 µm. New Powder AIRFLOW® CLASSIC Comfort has 40 µm particle size, for more smoothness and patient comfort.

ONLY USE THE ORIGINAL!



Name		PLUS	COMFORT
Flavor		N/A	LEMON / MINT CHERRY / NEUTRAL
Composition		ERYTHRITOL	SODIUM BICARBONATE
Particle size		~14µm	~40µm
pH		~7	~8.1
Teeth	Primary teeth	✓	✗
	Secondary teeth	✓	✓ Only supra-
	Biofilm	✓	✓ Only supra-
	Stains	✓	✓ Only supra-
	Early calculus	✓	✓ Only supra-
	Healthy enamel	✓	✓ Only supra-
	Dentine	✓	✗
	Cementum	✓	✗
	Gingiva	✓	✗
Soft tissues	Tongue and palate	✓	✗
	Restorative materials	✓	✗
Restorations	Prosthetics	✓	✗
	Dentures	✓	✗
Implants	Around peri-implant tissues	✓	✗
Orthodontics	Applicances including aligners	✓	✗



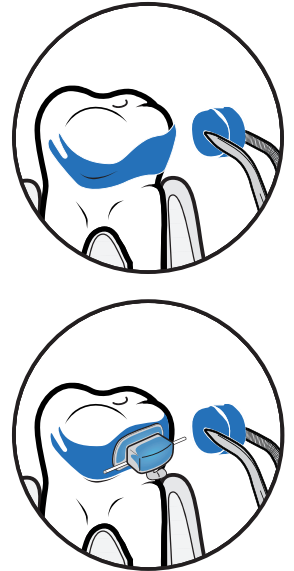
SO-CALLED "EMS COMPATIBLE" POWDERS IN THE MARKETPLACE MAY CAUSE DAMAGE TO ORAL TISSUES AND THE DEVICE. SEE BELOW A DAMAGED AIRFLOW NOZZLE AFTER USE WITH A "COMPATIBLE" POWDER. IF EMS PRODUCTS ARE DAMAGED BY USING "COMPATIBLE" POWDERS THE PRODUCT WARRANTY WILL BE LOST.



Damaged handpiece

WHY MAKE BIOFILM VISIBLE?

- ▶ With GBT we intend to eliminate all the biofilm, including areas which are difficult to access.
- ▶ If biofilm is made visible, it is removed much faster with GBT.
- ▶ What you see is what you remove.
Color removal = Biofilm removal. Also on soft tissues.
- ▶ The users of hand instruments, rubber cups and “polishing” paste need much more time to finish the treatment.
- ▶ The German Stiftung Warentest reported that the conventional prophylaxis only removes 50% of Biofilm in the difficult to access areas.*
- ▶ Colored teeth and gums will also help motivate the patient to improve their homecare – Oral Hygiene Instructions (OHI)



This 14 year old patient has a significant lack of oral hygiene. Disclosing agent reveals massive acidogenic biofilm.

Courtesy, Dr. Gleb Aseev

EMS **BIOFILM** DISCLOSER



- ▶ A new discloser for Biofilm was developed by EMS.
- ▶ The EMS Biofilm Discloser visibly reveals the presence of early and mature biofilm.

▶ 250 **DISCLOSING PELLETS**



- ▶ Pre-soaked pellets for 2 tone biofilm disclosure.
Reddish for new biofilm - Blue for mature biofilm

MAKE BIOFILM VISIBLE

Highlight to patients the disclosed biofilm and their problematic areas.
The color will guide the biofilm removal with AIRFLOW® PLUS Powder.
Once biofilm is removed, calculus is easier to detect.

1 box with 250 pellets

REF DV-158¹

¹ If available in your country

GBT HANDPIECES



- ▶ ONLY THE **VERY** BEST FOR MY PATIENTS
- ▶ ONLY THE **SWISS** ORIGINALS

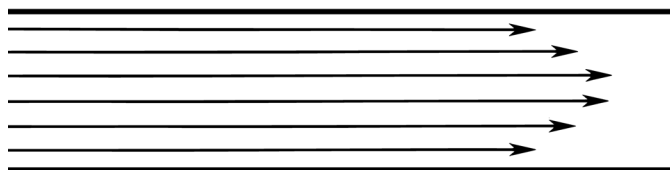
NEW AIR-FLOWING®



THE BRILLIANT NEW AIR-FLOWING® FROM THE INVENTOR OF THE ORIGINAL

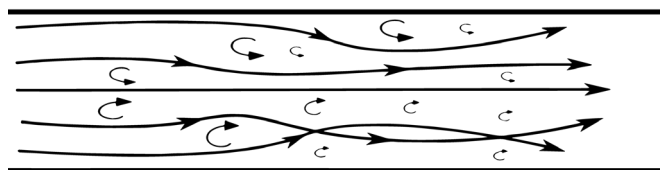
► The new AIRFLOW® MAX handpiece with its patented Laminar AIRFLOW® Technology is another brilliant innovation from the EMS Research Center. AIR-FLOWING® is now even more gentle, more comfortable, more efficient and aerosols are considerably reduced. There is a big difference between Air-Polishing and AIR-FLOWING®.

LAMINAR FLOW



AIRFLOW® MAX with the new Laminar Flow for perfect control.

TURBULENT FLOW



The traditional AIRFLOW® behavior.



Precise and focused air and AIRFLOW® PLUS Powder jet, shielded by water spray.

- **BETTER VISIBILITY**
- **A LOT LESS NOISE**
- **HIGH PRECISION WORK**
- **LESS RECOIL FORCE**
- **HIGH REDUCTION OF AEROSOL SPLATTER**
- **HIGH PATIENT COMFORT**
- **HIGH USER COMFORT**
- **MUCH SLIMMER AND LIGHTER HANDPIECE**



Six hexagonal water channels for more precision and high aerosol reduction.



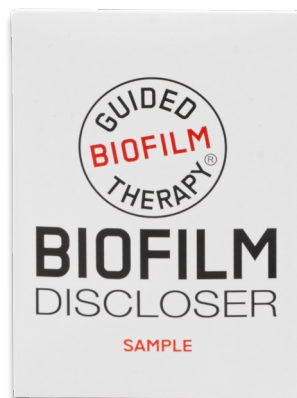
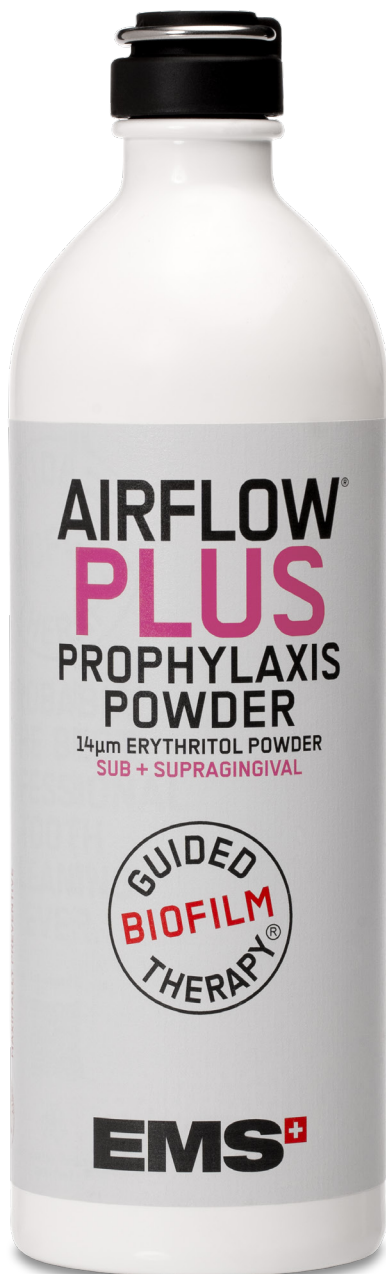
AIRFLOW® MAX

AIRFLOW® MAX INTRODUCTION KIT SMART

- ▶ AIRFLOW® MAX Handpiece
- ▶ Easy Clean
- ▶ AIRFLOW® PLUS Powder 400g
- ▶ Biofilm Discloser samples

REF FS-475

135°C
SSS > 1000 cycles



HANDPIECE



SO SIMPLE !

Use Easy Clean after each AIRFLOW® and PERIOFLOW® treatment, before sterilizing your handpieces. Prevents and in some cases solves handpiece clogging. Simply use the Easy Clean with water syringe. No need for needles anymore.



EASY CLEAN



REF FV-083

AIRFLOW® MAX, THE NEW AND BEST AIR-FLOWING® EVER



PLEASE FIND
THE CLINICAL
EVIDENCE HERE

GBT FLOWCONTROL®

**NEW GBT HIGH SPEED SUCTION AGAIN
DESIGNED IN SWITZERLAND, TO CONTROL
AEROSOL AND SPLATTER.**

**FOR BEST VISIBILITY AND
AEROSOL/SPLATTER
CONTROL, ALWAYS USE
THE GBT FLOWCONTROL®
IN COMBINATION WITH
THE GBT VISIGATE®**



- ▶ **BEST VISIBILITY**
- ▶ **AEROSOL /
SPLATTER CONTROL**

GBT FLOWCONTROL®¹

4x suction in one cardboard



REF FV-112/A

GBT FLOWCONTROL® SPARE PARTS¹

4x suction skirts



REF FV-118

¹ If available in your country



MATERIALS

- ▶ Body: PP (Polypropylene)
- ▶ Skirt: TPE (Thermoplastic Elastomer)



CLINICAL APPLICATIONS

- ▶ Best aerosol/splatter control solution during GBT Protocol and general dentistry
- ▶ Soft-tissue friendly



COMPATIBILITY

- ▶ GBT Protocol
- ▶ Standard 16 mm high-speed suction systems



REPROCESSING RECOMMENDATIONS

- ▶ Separate the body and the skirt for each reprocessing
- ▶ Compatible with sterilisation at 135° C



LIFETIME

- ▶ Body: Up to 250 reprocessing cycles
- ▶ Skirt: Up to 250 reprocessing cycles

Reminder: Disassemble skirt from the body before each reprocessing

WATCH THE
VIDEO ON
FLOWCONTROL®



PERIOFLOW® HANDPIECE

PERIOFLOW® APPLICATION

REF FS-474

- ▶ PERIOFLOW® Handpiece
- ▶ 20 PERIOFLOW® Nozzles
- ▶ Nozzle remover

135°C
SSS > 1000 cycles



40 PERIOFLOW® NOZZLES

Deep-pocket biofilm removal
with EMS PERIOFLOW®.
With depth markings

REF DT-476



CHECK TOOL

To remove safely
PERIOFLOW® Nozzle

REF FV-126



PIEZON® HANDPIECE

PIEZON® LED HANDPIECE

REF FS-455

- ▶ PIEZON® LED Handpiece
- ▶ PIEZON® PS Instrument
- ▶ 4 spare Light Guides

135°C
SSS > 1000 cycles



PIEZON® NO LED HANDPIECE

REF EN-061

Universal PIEZON® Original handpiece

135°C
SSS > 1000 cycles



COMBITORQUE

Unique combination of torque wrench and instrument holder.

135°C
SSS > 1000 cycles



REF FV-097

PI MAX INSTRUMENT TOOL

To connect, disconnect and check the PI MAX Instrument tip.

135°C
SSS > 1000 cycles



REF FV-117

PIEZON® NO PAIN PS INSTRUMENT

- The slogan "I feel good" was launched when EMS invented the Swiss PIEZON® PS Instrument.
- The Original Swiss PIEZON® PS Instrument will do 95 % of all scaling. No need for different instruments - this makes work easier. For the remaining 5%, EMS has a new solution: the PIEZON® PSR and PSL Instruments.



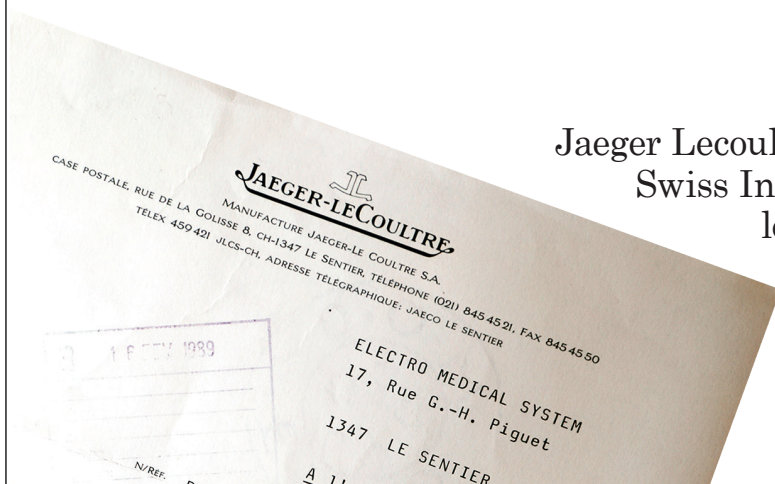
PIEZON® PS
Instrument



- The PIEZON® piezo-ceramic technology was invented by Pierre Mabilie, co-founder of EMS.

DID YOU KNOW?

The prestigious Swiss watchmaker Jaeger Lecoultre was the first partner to develop EMS Swiss Instruments when EMS was still a startup long before the Company's EMS Research Center and Manufacture was built in Nyon, Switzerland.





ONLY USE THE SWISS ORIGINAL EMS INSTRUMENTS!



Policy of FDI - World Dental Federation:

“The policy is intended to help ensure dental products are safe for patient care and conform to manufacturers’ specifications, international standards and government regulations.”

Following the FDI statement on „Non Compliant Dental Products“, please be aware that EMS devices have been designed and tested for the exclusive use with EMS PIEZON® Instruments.

The EMS Instrument, the Handpiece and the NO PAIN Electronic module have to vibrate in harmony like in a Trilogy.
Using so-called “compatible” and copy tips from third parties can damage your patients teeth and EMS Handpieces.
They were developed and made by EMS for each other.
One PS Instrument is designed for up to 1000 treatments.
The cost of one use of a PS instrument is only 5 cents. There is absolutely no reason to "save" money here and to use "compatible" tips . If the Piezon Handpiece will be damaged (the thread) it will lose its Warranty.
At the end of the day “compatible” tips will always cost you more



PIEZON® INSTRUMENTS

PS INSTRUMENT

For 95% of all cases.
Universal PIEZON instrument
for sub- and supragingival
calculus removal. Best
interproximal access.



REF DS-016A

REF DS-016A/T (X3)

PI MAX INSTRUMENT¹

The new instrument for
calculus removal around
implants and restorations.
PEEK with 30% carbon
fiber and medical grade
stainless steel.



REF DS-010A

PI MAX TIPS¹

Interchangeable PEEK
with 30% carbon fiber tip
for the new PIEZON®
PI MAX Instrument.



REF DT-065A (X4)

PI MAX INSTRUMENT INTRODUCTION KIT¹

The PI MAX and its
accessories in one package.



REF FS-295#

¹ If available in your country

PSL INSTRUMENT

Best approximal,
mesial and distal access,
supra- and subgingival.



REF DS-083A

REF DS-083A/T (X3)

PSR INSTRUMENT

Best approximal,
mesial and distal access,
supra- and subgingival.

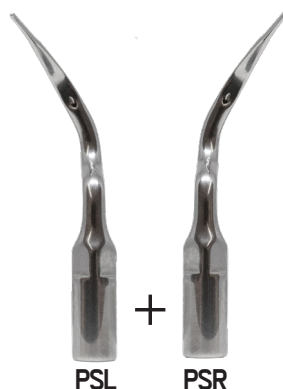


REF DS-084A

REF DS-084A/T (X3)

PSR + PSL INSTRUMENTS

Best approximal,
mesial and distal access,
supra- and subgingival.



REF FS-461

PIEZON® INSTRUMENT CHECK TOOL

To check instrument
length and tip.



REF FV-126

Use with :



HYGIENE SOLUTIONS

NIGHT CLEANER¹



► NIGHT CLEANER delivers easy-to-use long-term cleaning and disinfection. Keep the waterline of your unit “biofilm free”.

- PROCEDURE IS 100% AUTOMATIC
- LESS THAN 10 SECONDS IN THE EVENING
- THE COST IS LESS THAN 50 CENTS PER DAY
- CLEANS BOTH AIRFLOW® AND PIEZON® LINES

Use with :



6 X 800 ML NIGHT CLEANER
6 month's use.

REF DV-154-A

¹ If available in your country

EASY TO USE

BACTERX[®] PRO¹



IN THE PRACTICE

For professional use in the dental practice. For use as a patient rinse prior treatment: to gargle for at least 40 seconds. Use undiluted. Do not rinse with water.

Reduce the number of viable bacteria and viruses in aerosols, thereby reducing the bacterial and viral burden for patients and practice staff.



WITHOUT ALCOHOL

4x 1l bottles

REF DV-114/A/EN

USE WITH THE PIEZON[®] PS INSTRUMENT

For use, in the dental practice, as rinsing solution during treatment with the PIEZON[®] PS Instrument.

Use with :



¹ If available in your country

GBT AIRFOAM

AIRFOAM WITH FLUORIDE

► Clinicians recommend AIRFOAM to protect the teeth and to provide a smooth and fresh feeling after a GBT treatment. No more polishing needed



GENERAL INFORMATION

- 150 ml fluoride foam
- Berry flavour



BENEFITS

- Easy to apply
- Caries-preventive effect
- Fresh taste in the mouth
- Smooth feeling on the teeth

No more polishing needed



RECOMMENDATIONS

- For professional use only
- Not suitable for children under 7 years
- Shake well before each use
- Do not swallow during application
- Wait 30 minutes before eating or drinking
- Storage between 15°C - 30°C



CONTAINS

- Cetylpyridinium chloride (CPC) 0.05 %
- Sodium fluoride 0.32 %
- Fluoride 0.145 % (1450 ppm)

REF DV-173/*¹

DO NOT USE THE PRODUCT IN CASE OF HISTORY OF KNOWN REACTION TO CPC OR FLUORIDE



**MORE ABOUT
THE GBT
AIRFOAM**

¹ If available in your country

EMS GBT VISIGATE®

GBT VISIGATE®

► A complementary GBT tool, to improve visibility and comfort during the GBT treatment.



APPLICATIONS

- GBT treatments
- General dentistry



MAIN FEATURES

- Lip and cheek retractor
- Enhanced visibility
- Easier access
- Improved workflow
- Ease of use
- Comfortable for the patient
- Clinically proven since 2004
- Available in 2 sizes (small and regular)



MATERIALS

- Styrene-ethylene/butylene-styrene (SEBS) and polypropylene
- Latex-free, flexible material



LIFETIME

- Single use



1 box with 60 small GBT VISIGATE®

1 box with 60 regular GBT VISIGATE®

1 box with 30 small and 30 regular GBT VISIGATE®

REF FV-123/S¹

REF FV-123/R¹

REF FV-123/SR¹



MORE ABOUT
THE GBT
VISIGATE®

¹ If available in your country

ACCESSORIES



FOOT PEDAL

Boost and wireless pedal

EK-404B



CORD

AIRFLOW® cord

EM-145A

PIEZON® cord (AFPM)

EM-146A



POWDER CHAMBER

PLUS powder chamber - red

EL-607A

CLASSIC powder chamber - white

EL-606A



BOTTLES

PIEZON® bottle - ml graduation (AFPM)

EG-111A

Water bottle - no graduation (AFOne)

EG-121A

NIGHT CLEANER bottle - blue

EG-120A



HYGIENE

3x water filters - blue

FV-094

Air filter - white

EL-599

Easy Clean

FV-083



Clip+Clean

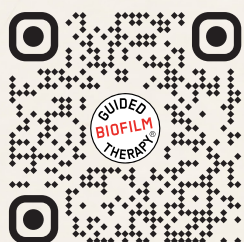
EL-655

THE SWISS DENTAL ACADEMY



THE SWISS DENTAL ACADEMY OFFERS

- ▶ GBT courses in your area.
- ▶ Individual one day GBT training.
- ▶ Live and on-demand webinars.



www.sda-dental.org

SDA 

JOIN THE **GBT** MOVEMENT!

**"I FEEL
GOOD"**

**CALL YOUR
GBT EXPERT
FROM EMS**



„The GBT Certification to me is a community. It’s a community where providers can share knowledge, where they are being continuously trained and making sure that we always follow the standardized protocol for the benefit of our patients. I am absolutely thrilled to be the first group of GBT-certified practices.“

- PATRICK SAASEN, CEO OF ADENT DENTAL CLINICS, FIRST GBT-CERTIFIED DENTAL CLINIC

GET **GBT** CERTIFIED!

CERTIFY YOUR PRACTICE

As a GBT Certified practice, become a part of an exclusive network of passionate dental professionals offering dental prophylaxis at the highest possible standards. Backed by the evidence-based GBT protocol, GBT Certified practices benefit from a wealth of exclusive services.



HIGHER VISIBILITY AND REVENUE

- ▶ Your practice will be listed on the GBT Patient Finder (www.gbt-finder.com)*, an online directory to help patients locate you as their closest GBT Certified practice.



MARKETING TOOLS TO HELP PROMOTE YOUR PRACTICE

- ▶ Welcome kit to help incorporate a recognisable GBT appearance
- ▶ GBT branded material
- ▶ Social media templates and 3D patient-friendly video



EXCLUSIVE EDUCATION PROGRAM

- ▶ Training based on the latest scientific and clinical research
- ▶ Regular e-learning modules and webinars
- ▶ Follow-up training & training for new team members



A ONE-YEAR WARRANTY EXTENSION

- ▶ Receive a second year of warranty on your new AIRFLOW® Prophylaxis Master and AIRFLOW® ONE*

*This warranty is only valid if you have completed your first annual maintenance within 12 months following purchase.



PREMIUM CUSTOMER SERVICE

- ▶ Ask your GBT expert which benefits apply in your country



**JOIN THE GBT
MOVEMENT**

*in the authorized countries

THE GBT TOOLS



AIRFLOW® Prophylaxis Master



PIEZON® Instruments



GBT FLOWCONTROL®



AIRFLOW® MAX handpiece



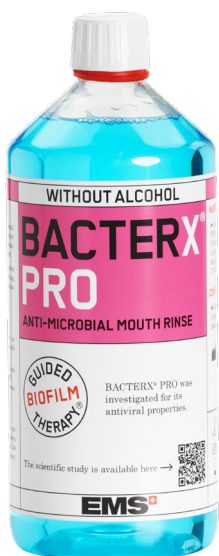
PIEZON® LED handpiece



PERIOFLOW® handpiece



GBT VISIGATE®



SDA 
SWISS DENTAL ACADEMY



HEADQUARTERS

CH

NYON, SWITZERLAND
E.M.S. ELECTRO MEDICAL SYSTEMS S.A.
 Chemin de la Vuarpillière 31
 CH - 1260 Nyon
www.ems-dental.com/en/contact
www.ems-dental.com
 T. +41 22 994 47 00
 F. +41 22 994 47 01



WORLDWIDE EMS AFFILIATES

DE

MUNICH, GERMANY
EMS ELECTRO MEDICAL SYSTEMS GMBH
 Stahlgruberring 12
 DE - 81829 München
 T. +49 89 42 71 61 0
 F. +49 89 42 71 61 60
 E-mail: info@ems-ch.de

FR

FONCINE, FRANCE
EMS ELECTRO MEDICAL SYSTEMS FRANCE SARL
 32, route de Pontarlier
 FR - 39460 Foncine-le-Haut
 T. +33 3 84 51 90 01
 F. +33 3 84 51 94 00
 E-mail: info@ems-france.fr

ES

MADRID, SPAIN
EMS ELECTRO MEDICAL SYSTEMS ESPAÑA SLU
 C/ Tomás Bretón, 50-52 2ª planta
 ES - 28045 Madrid
 T. +34 91 528 99 89
 E-mail: info@ems-espana.com

PT

LISBON, PORTUGAL
EMSPOR - ELECTRO MEDICAL SYSTEMS PORTUGAL, UNIPESSOAL LDA
 Avenida Miguel Bombarda, 36, 6A
 PT - 1050-165 Lisboa
 T. +351 912 338 777
 E-mail: info@ems-portugal.com

IT

MILANO, ITALY
EMS ITALIA S.R.L
 Via Carlo Pisacane 7B
 IT - 20016 Pero (MI)
 T. +39 02 3453 8111
 E-mail: dental@ems-italia.it

UK

CAMBRIDGESHIRE, UNITED KINGDOM
EMS UK LTD
 Suite 2 - Xenus House - Sandpiper Court
 Phoenix Park - Eaton Socon
 UK - St Neots, Cambridgeshire
 PE19 8EP
 T. +44 01480 587260
 Email: info@ems-unitedkingdom.com

SE

STOCKHOLM, SWEDEN
EMS NORDIC AB
 Hammarby Fabriksväg 61
 SE - 120 30 Stockholm
 T. +46 8 899 102
 E-mail: info@ems-nordic.se

PL

TYCHY, POLAND
EMS POLAND SP. Z O.O.
 Fabryczna 43
 PL - 43-100 Tychy
 T. +48 32 4937060
 E-mail: info@ems-poland.com

GR

THESSALONIKI, GREECE
EMS EAST MEDITERRANEAN
 10 km. Thessaloniki - Thermi,
 GR - Thessaloniki 57001
 T. +30 231 231 61 30

JO

AMMAN, JORDAN
EMS ELECTRO MEDICAL SYSTEMS JORDAN
 No.2 - second floor, 195 Arar (Wadi Saqra) str.
 JO - Amman

US

DALLAS, USA
EMS CORPORATION
 11886 Greenville Avenue, Ste 120
 US - Dallas, Texas 75243
 T. +001 972 690 8382
 F. +001 972 690 8981
 E-mail: info@ems-na.com

AU

SYDNEY, AUSTRALIA
EMS OCEANIA PTY LTD
 The Woolstores - Suite 3, Shed 73
 4E Huntley Street
 AU - Alexandria, NSW 2015
 T. +61 405 095 867
 E-mail: info@ems-oceania.com

JP

TOKYO, JAPAN
E.M.S. JAPAN BRANCH OFFICE
 2F Takebashi Yasuda Building,
 3-13 Kanda Nishiki-cho
 JP - Chiyoda-ku, Tokyo, 101-0054
 T. +81 (0) 3-6810-9351
 F. +81 (0) 3-6810-9352
 E-mail: emsjapan@ems-ch.com

CN

SHANGHAI, CHINA
医迈斯电子医疗系统贸易 (上海) 有限公司
E.M.S. ELECTRO MEDICAL SYSTEMS TRADING (SHANGHAI) CO., LTD.
 24A, Jin Sui Mansion,
 N°379 Pudong Nan Rd.
 CN - Shanghai 200120
 T. +86 21 3363 2323
 E-mail: emschina@ems-ch.com

KR

SEOUL, SOUTH KOREA
EMS ELECTRO MEDICAL SYSTEMS KOREA LTD.
 13, Beobwon-ro 8-gil, Songpa-gu
 T. +82 70 7807 2875
 E-mail: emskorea@ems-ch.com



E.M.S.
Electro Medical Systems S.A.
Ch. de la Vuarpillière 31
1260 Nyon - Switzerland
+41229944700
EMS-DENTAL.COM

EMS 
MAKE ME SMILE.